



Community Foundation  
LORAIN COUNTY

# THE POWER OF COMMUNITY

2017 REPORT TO THE COMMUNITY

# THE POWER OF COMMUNITY

## FINANCIAL POSITION

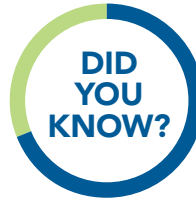
**\$138**  
MILLION  
Assets

**\$5.8**  
MILLION  
Gifts

**\$6**  
MILLION  
Grants

(as of 12/31/2017)

## FACTS ON GIVING



**69%** of our donations are **\$100** or less!

*Every Donation Counts!*

## AFFILIATE FUNDS



### African American Community Fund

Grants and scholarships: \$46,000



### The Hispanic Fund

Grants and scholarships: \$24,000



### Huron County Community Foundation

Grants and scholarships: \$148,000



### The Women's Fund

Grants: \$27,000



### The Youth Fund

Grants: \$7,800

## FUNCTIONAL EXPENSES

Program Services

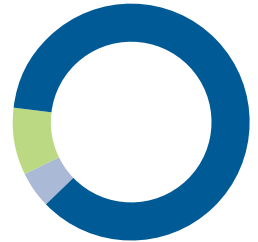
**86%**

Administrative

**9%**

Fund Development

**5%**



*\*full financial report available at [peoplewhocare.org](http://peoplewhocare.org)*

## 18 NEW FUNDS



**18 new endowment funds:**  
**\$923,600**

An increase in almost  
\$1 million in assets!



## SCHOOL GRANTS

**\$404,000**

Helping our schools, teachers, and students achieve excellence.

## SCHOLARSHIPS

**\$368,000**

Helping 137 students pursue their dreams.



### AFRICAN AMERICAN COMMUNITY FUND



A new "Shark Tank" style event awarded \$6,000 in grants for a summer STEM camp, an afterschool reading program, and a multi-generational mentoring program for African American youth.

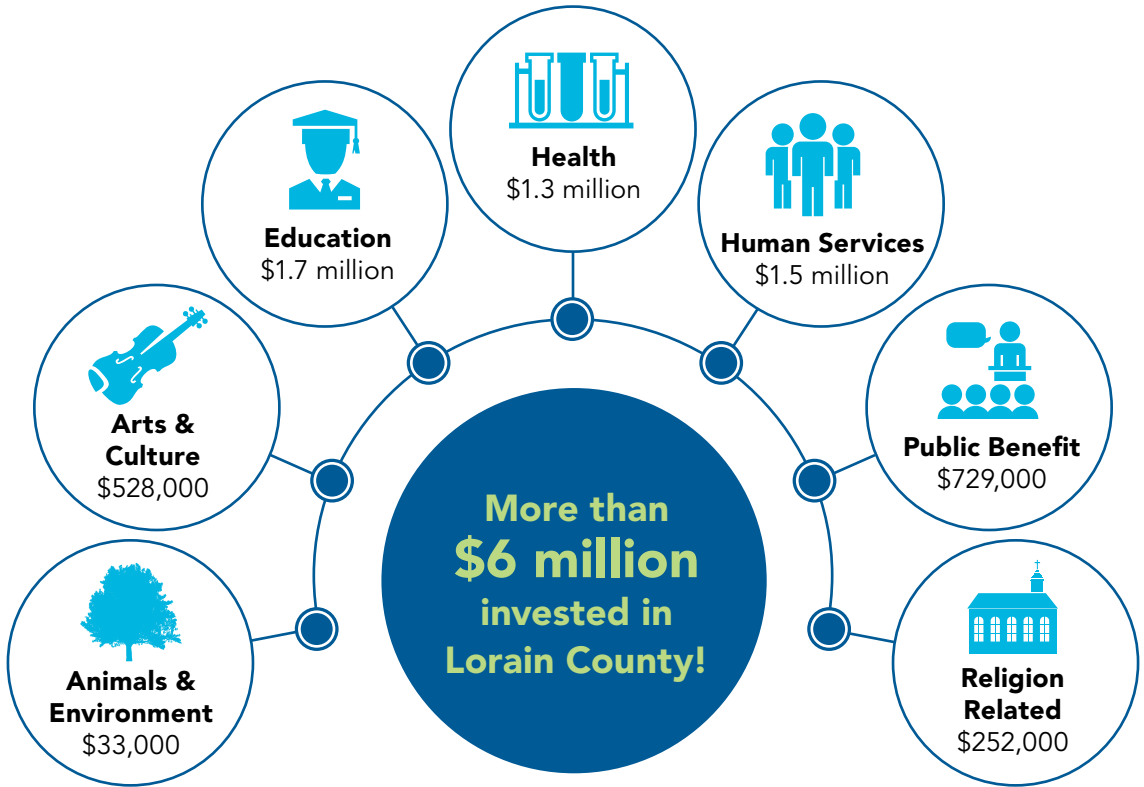
### HISPANIC FUND



A \$3,000 grant is providing meals for seniors participating in the El Dorado Seniors Program at El Centro de Servicios Sociales, Inc., a weekly opportunity for seniors to gather and socialize.

# FOR GOOD. FOR LORAIN COUNTY. FOREVER.

## GRANTS BY IMPACT AREA



*\*includes grants from all endowment fund types: agency funds, designated funds, donor advised funds, field of interest, scholarship, school endowment funds, and unrestricted funds.*

## HONORARIUM & MEMORIAL GIFTS

**\$506,000** was donated in honor or memory of loved ones!



## LEGACY SOCIETY

More than **65 individuals and families** have included the Community Foundation in their wills or estate plans.

### LIFESHARE LEGACY FUND



A \$160,000 grant is helping The LCADA Way keep individuals engaged in treatment, begin recovery, and become contributing members of the community through expansion of its Medication Assisted Treatment program.

### LGBTQ+ COMMUNITY OUTREACH



A \$23,000 grant to the LGBT Center of Greater Cleveland is delivering outreach services to Lorain County residents. Mobile drop-in centers provide counseling, support groups, and referrals to other resources.



# DONOR ADVISED FUNDS TRANSFORMED >>

## OUR FLEXIBLE ASSETS INCREASED BY \$2.3M DOLLARS

What will the needs of our community be a year from now? Ten years? Fifty? We can't predict what the future may hold. However, we can make sure we have the ability to fund important and often unanticipated community change. Our capacity to do so improved last year by **\$2.3M dollars**. This increase in flexible assets happened because of gifts to the Campaign for Emerging Opportunities, healthy investment returns, and donor advisors who entrusted their future grantmaking to the Community Foundation. **These assets enable us to mobilize grant dollars quickly to direct those dollars where they are most needed in the community.**

**25% increase  
in unrestricted  
endowment funds**

This increase would not have happened without donors who changed the nature of their Donor Advised Funds. Donor advisors are personally involved in recommending grant awards from their endowment funds every year. Instead of continuing that practice, these donor advisors entrusted to the Community Foundation the ability to choose where to direct grants from those funds. Donor Advised Funds that were transformed in 2017: **Joseph A. and Mary N. Ignat Fund, Patricia Lindley Charitable Fund, Robert E. Bass Fund, Vanek Family Charitable Fund, and the Robert I. and Helen J. Woodward Fund.** Their legacies will continue to benefit our community's pressing needs, forever.

We are grateful to all donors for their faith and trust in the Community Foundation of Lorain County. You make community impact possible!

### WOMEN'S FUND



A \$2,000 grant is bringing technology to single mothers in the Colonial Oaks Mobile Home Park in Elyria. Job-search skills training is provided by librarians from the Grafton-Midview Public Library.

### YOUTH FUND



Forty high school students from nine school districts attended the 2017 Youth Summit. Students participated in a poverty simulation and learned how they can be philanthropists and advocates in their communities.

## Dear Friends,

We are delighted to share and celebrate the substantial impact you made possible in 2017. It is through your generosity and commitment that we can live out our mission: to Connect People Who Care With Causes That Matter.

You, our caring donors, community partners, and friends are vital to the important causes we support on your behalf. Our annual report theme for 2017 – The Power of Community – illustrates the magnitude of our shared connection and impact.

We received more than **\$5.8 million dollars in gifts** and bequests in 2017. During the same period, we distributed more than **\$6 million in grants and scholarships**. Our Affiliate Funds launched new and innovative projects. New endowment funds totaling nearly one million dollars were established. And our flexible assets increased by **\$2.3 million dollars**, giving us greater ability to fund important and often unanticipated community change.

A community foundation is only as strong as the people who join us in making a difference. Through the Power of Community we achieve so much more together than any one of us could alone. We thank you for coming together in support of Lorain County!



*Cynthia H. Andrews*  
Cynthia H. Andrews  
President and CEO



*Farnaz Ansari Berna*  
Farnaz Ansari Berna  
Board Chair

**MISSION:**  
We Connect People Who Care  
With Causes That Matter



## BOARD OF DIRECTORS

**Farnaz Ansari Berna**  
*Board Chairperson &  
Executive Committee Chair*

**Susan J. Bowers**  
*Board Vice-Chairperson &  
Audit Committee Chair*

**Sadie Goble**  
*Treasurer*

**Rey Carrion**  
*Secretary*

Kevin Donovan, Esq.  
*Grants Committee Chair*

Sharon Furcron  
*Governance Committee Chair*

Mike Shebak  
*Investment Committee Chair*

Karen A. Wells, Ed.D.  
*Community Engagement Committee  
Chair*

## DIRECTORS

Charlita Anderson-White

Chris Bellamy

Grace Broome, *Youth Fund President*

Albert Calo, *Hispanic Fund President*

Ray Cushing

Maria Grega

Katarina Levit, *Women's Fund  
President*

Regan Phillips, *African American  
Community Fund President*

Randy Wagner

## STAFF

Cynthia H. Andrews, *President and  
CEO*

David Borocz-Johnson, *Program  
Associate*

Theresa Eged, *IT Manager*

Nancy Huller, *Finance Manager*

Angela Lee, *Scholarship Coordinator*

Danielle M. Locke, CAP®, *Gift  
Planning Officer*

Rachel Ocasio, *Relationship Manager*

Lisa Ruppel, *Communications Officer*

Karl Schneider, *Farmland Advisor*

Michele Skinn, *Advancement Officer,  
Huron County Community  
Foundation*

Holly Spitz, *Chief Financial Officer*

Linda Styer, *Senior Program Officer*



## WAYS TO GIVE >>

The Community Foundation of Lorain County can accept a variety of assets to assist you in making a donation. (List not exhaustive)

### YOUR INVESTMENT STAYS IN LORAIN COUNTY FOREVER.



Cash



Grain



IRA Rollover



Securities



Personal Property



Life Insurance



Charitable  
Gift Annuity



Business Interests



Retirement  
Plan Assets



Real Estate



Community Foundation

LORAIN COUNTY

9080 Leavitt Rd., Elyria, OH 44035

[www.peoplewhocare.org](http://www.peoplewhocare.org)



Excellence. Accountable. Impact.™